



## T35、BFT35 轴流风机 T35-11、BFT35 Axis Circulation Blower



### 一、风机的用途

T35-11 轴流通风机为节能新产品,具有结构简单,效率高,振动小,噪声较低的特点。适用于一般工作场所、仓库、住宅、建筑物的通风换气;或加强暖气散热之用,若将机壳去掉亦可作自由风扇;也可在较长的排气管道内间隔串联安装,以提高管道中的全压。输送介质为干燥的空气及无腐蚀性、不自然、不含有粘性物质,输送介质的温度,不得超过 60℃,介质中所含的尘土及硬质颗粒不得大于 150mg/m<sup>3</sup>。

### 一、Purpose of the Blower

T35-11 Axis Circulation Blower is an energy saving new product, with the characteristics of simple structure, high efficiency, little vibration and low noise. It applies to the ventilation in ordinary work place, warehouse, house and building, or for strengthening the cooling use of central heating, or used as free fan if the shell is removed; or installed in series interval in the long vent-pipe to enhance the full pressure in the pipe. The medium conveyed is dry air and other matters which is non-corrosive, non-self-igniting and non glutinous. The temperature of the medium conveyed should not be higher than 60℃. The powder dust contained in the conveying gas should be no more than 150mg/m<sup>3</sup>.



## 二、风机的型式 Models of the Blower

1、该风机共有十三种规格可供选择。

机号为NO2.8; 3.15; 3.55; 4; 4.5; 5; 5.6; 6.3; 7.1; 8; 9; 10; 12;

2、风机选用不同极数的电机与叶轮直接联接。风机外壳为直筒形，面对进风器端看叶轮旋转方向为逆时针方向。

This blower has 13 specifications for selection as:

Models: NO2.8; 3.15; 3.55; 4; 4.5; 5; 5.6; 6.3; 7.1; 8; 9; 10; 12;

The blower selects motor of different poles to connect the impeller. Canister shape. Facing the blower, the rotating direction of the impeller is anticlockwise.

## 三、使用、安装与维修

### Operation, installation and maintenance

1、本系列通风机若在较长的管道内，同机号的通风机可串联，以增高风压。

2、通风机不得倒吊使用。

3、安装前详细检查是否因包装、运输而损坏、变形，若有待修理妥善后，才能进行安装。

4、安装时要注意检查各联接部分有无松动，叶轮叶片与风筒间隙应均匀，不得相碰。

5、连接出风口之管道重量不应由风筒承受，安装时应加支撑，在通风机进风口处应安装进风口，并装好防护铁丝网。

6、风机底座必须与地基平面自然接合，不得敲打底座强制联接，以防底盘变形。安装时应校正底座，加垫铁片，基本保持水平位置然后再将地脚螺母旋紧。

7、风机长期未使用，必须先进行检查各联接部分是否牢固可靠，叶轮与风筒间隙是否适宜，并经试运转后，方可正式使用。

8、经常注意风机在运转中有无异常声响，振动是否加大，并应及时检查修理。

9、风机正式运转后每半年检查一次。

1. long vent-pipe to enhance the wind pressure in the pipe.

2. Upside-down is prohibited.

3. examine carefully whether there is any damage or distortion due to package or transportation. If applicable, install after repair.

4. examine whether there is any loose between the joint parts, the clearance between the impeller sheet and the wind canister, no touching.

5. uphold at installation. Install the wind hole with the blower as well as fence wire netting.

6. naturally, no compulsory linking by striking the base in order not to distort the chassis. The base should be revised while installing.

7. relievable and firm, and whether the clearance between the impeller and the wind canister is appropriate. Operate formally after trial operation.

8. Check regularly whether there is any abnormal noise and whether the vibration is increasing, and repair timely.

9. Check every half a year after the formal operation of the blower.



# 丹徒风机

## DAN TU FANS

### T35、BFT35 型轴流通风机性能表

T35、BFT35 Axis Circulation Blower Datasheet

机号 No.	叶轮 直径 Impeller Diameter mm	叶轮 周速 Impeller Circular Speed m/s	主轴 转速 Principal Axis Rotating Speed r/min	叶片 角度 Vane Angel °	风量 Wind Volume m <sup>3</sup> /h	全压 Full Pressure Pa	全压 效率 Full Pressure Efficiency (%)	需用轴 功率 Axis Power Required kW	采用 轴功率 Axis Power Adopted kW	配用电动机 Motor Matched	
										型 号 Model	功率 Power kW
2.8	280	42.5	2900	15	1224	128	0.64	0.068	0.078	YSF-5622	0.12
				20	1742	141	0.68	0.100	0.115	YSF-5632	0.180
				25	2560	143	0.69	0.147	0.169	YSF-5632	0.180
				30	2495	165	0.68	0.168	0.193	YSF-6322	0.350
				35	2778	186	0.64	0.224	0.258	YSF-6332	0.370
		21.5	1450	15	613	32	0.64	0.0085	0.0097	YSF-5014	0.025
				20	873	35.2	0.68	0.0126	0.015	YSF-5014	0.025
				25	1133	35.7	0.69	0.0163	0.016	YSF-5014	0.025
				30	1251	41.2	0.68	0.021	0.024	YSF-5024	0.040
				35	1392	46.6	0.64	0.0282	0.032	YSF-5024	0.040
3.15	315	47.8	2900	15	1944	170.1	0.67	0.137	0.158	YSF-6312	0.180
				20	2681	186.6	0.71	0.196	0.225	YSF-6322	0.250
				25	3418	189.2	0.72	0.250	0.288	YSF-6332	0.370
				30	3753	217.7	0.71	0.320	0.368	YSF-7122	0.550
				35	4155	247	0.67	0.425	0.489	YSF-7122	0.550
		23.9	1450	15	972	42.5	0.67	0.017	0.020	YSF-5014	0.025
				20	1340	46.6	0.71	0.024	0.028	YSF-5024	0.040
				25	1709	47.2	0.72	0.031	0.036	YSF-5024	0.040
				30	1877	54.9	0.71	0.040	0.046	YSF-5614	0.060
				35	2078	61.7	0.67	0.053	0.061	YSF-5624	0.090
3.55	355	53.9	2900	15	2783	216.1	0.67	0.249	0.286	YSF-7112	0.370
				20	3839	237	0.71	0.356	0.409	YSF-7122	0.550
				25	4895	240.3	0.72	0.454	0.523	YSF-7132	0.750
				30	5375	279	0.71	0.587	0.673	YSF-7132	0.750
				35	5951	313.6	0.67	0.77	0.886	YSF-8022	1.1
		27.0	1450	15	1394	54	0.67	0.031	0.036	YSF-5024	0.040
				20	1923	59.2	0.71	0.045	0.052	YSF-5614	0.060
				25	2452	60.2	0.72	0.057	0.066	YSF-5624	0.090
				30	2692	69.7	0.71	0.074	0.085	YSF-5624	0.090
				35	2981	78.4	0.67	0.095	0.109	YSF-6314	0.120
4	400	60.7	2900	15	2783	216.1	0.67	0.249	0.286	YSF-7112	0.370
				20	3839	237	0.71	0.356	0.409	YSF-7122	0.550
				25	4895	240.3	0.72	0.454	0.523	YSF-7132	0.750
				30	5375	279	0.71	0.587	0.673	YSF-7132	0.750
				35	5951	313.6	0.67	0.77	0.886	YSF-8022	1.1
		27.0	1450	15	1394	54	0.67	0.031	0.036	YSF-5024	0.040
				20	1923	59.2	0.71	0.045	0.052	YSF-5614	0.060
				25	2452	60.2	0.72	0.057	0.066	YSF-5624	0.090
				30	2692	69.7	0.71	0.074	0.085	YSF-5624	0.090
				35	2981	78.4	0.67	0.095	0.109	YSF-6314	0.120



# 丹徒风机

DAN TU FANS

机号 No.	叶轮 直径 Impeller Diameter mm	叶轮 周速 Impeller Circular Speed m/s	主轴 转速 Principal Axis Rotating Speed r/min	叶片 角度 Vane Angel °	风量 Wind Volume m³/h	全压 Full Pressure Pa	全压 效率 Full Pressure Efficiency (%)	需用轴 功率 Axis Power Required kW	采用 轴功率 Axis Power Adopted kW	配用电动机 Motor Matched		
										型号 Model	功率 Power kW	
4.5	450	34.2	1450	15	2838	86.8	0.67	0.102	0.117	YSF-6314	0.120	
				20	3914	95.2	0.71	0.146	0.168	YSF-6324	0.180	
				25	4991	96.5	0.72	0.186	0.214	YSF-7114	0.250	
				30	5480	112	0.71	0.240	0.276	YSF-7124	0.370	
				35	6067	126	0.67	0.317	0.364	YSF-7124	0.370	
5	500	38.0	1450	15	4289	112.6	0.67	0.189	0.217	YSF-7114	0.250	
				20	5763	124.8	0.71	0.266	0.306	YSF-7124	0.370	
				25	7273	129.6	0.72	0.338	0.389	YSF-8014	0.500	
				30	7907	145.6	0.71	0.426	0.490	YSF-8014	0.550	
				35	8712	164.6	0.67	0.561	0.645	YSF-8024	0.750	
			25.1	960	15	2839	49.1	0.71	0.055	0.035	YSF-8026	0.370
					20	3815	54.4	0.75	0.077	0.089	YSF-8026	0.370
					25	4792	56.8	0.77	0.098	0.112	YSF-8026	0.370
					30	5235	63.5	0.75	0.123	0.141	YSF-8026	0.370
					35	5768	71.8	0.71	0.162	0.186	YSF-8026	0.370
5.6	560	42.5	1450	15	6025	140.9	0.71	0.332	0.382	YSF-7124	0.370	
				20	8097	156.1	0.75	0.468	0.538	YSF-8014	0.550	
				25	10168	162.6	0.77	0.590	0.686	YSF-8024	0.750	
				30	11110	182.1	0.75	0.749	0.861	YT90S-4	1.1	
				35	12239	206	0.71	0.986	1.137	YT90S-4	1.1	
			28.1	960	15	3989	61.8	0.71	0.096	0.110	YSF-8026	0.370
					20	5361	68.4	0.75	0.136	0.156	YSF-8026	0.370
					25	6732	71.3	0.77	0.173	0.199	YSF-8026	0.370
					30	7355	79.8	0.75	0.210	0.241	YSF-8026	0.370
					35	8103	90.3	0.71	0.286	0.329	YSF-8026	0.370
6.3	630	47.8	1450	15	8579	178.3	0.71	0.598	0.688	YSF-8024	0.750	
				20	11528	197.6	0.75	0.844	0.971	YT90S-4	1.1	
				25	14477	205.8	0.77	1.075	1.236	YT90S-4	1.5	
				30	15817	230.5	0.75	1.350	1.553	YT90L-4	1.5	
				35	17426	260.7	0.71	1.777	2.044	YT100L-4	2.2	
			31.7	960	15	5680	78.2	0.71	0.174	2.00	YSF-8026	0.370
					20	7632	86.6	0.75	0.245	0.282	YSF-8026	0.370
					25	9585	90.2	0.77	0.312	0.359	YSF-8026	0.370
					30	10472	101.0	0.75	0.392	0.451	YT90S-6	0.750
					35	11532	114.3	0.71	0.516	0.680	YT90S-6	0.750



# 丹徒风机

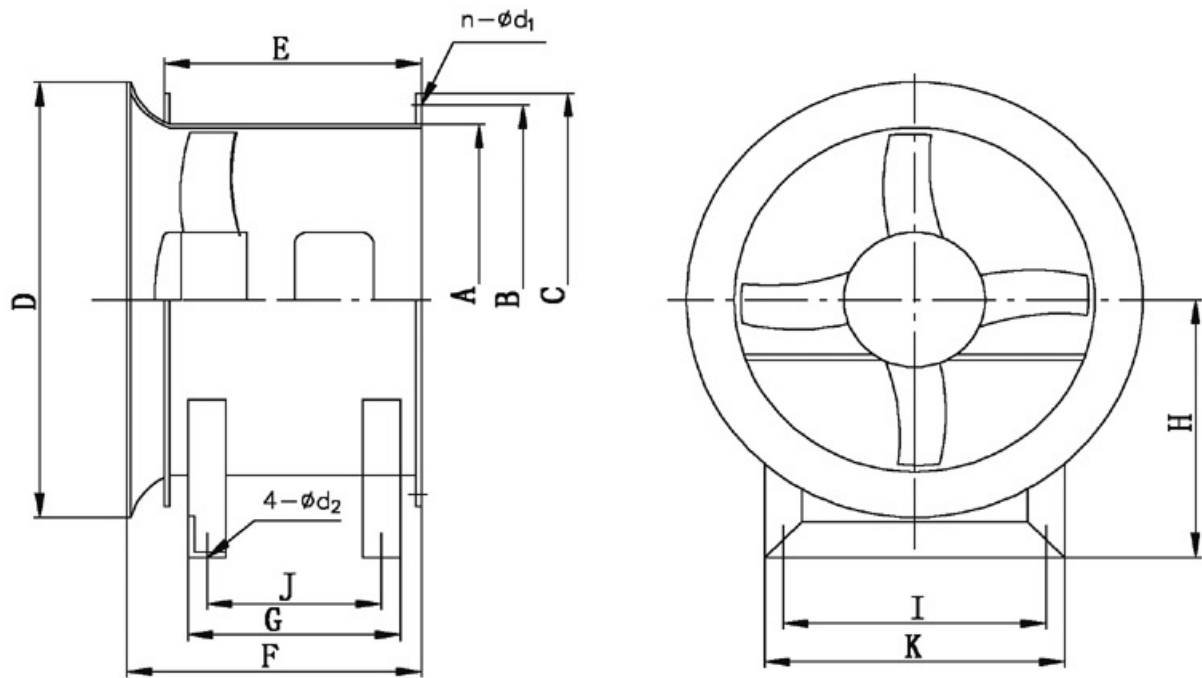
DAN TU FANS

机号 No.	叶轮 直径 Impeller Diameter mm	叶轮 周速 Impeller Circular Speed m/s	主轴 转速 Principal Axis Rotating Speed r/min	叶片 角度 Vane Angel °	风量 Wind Volume m <sup>3</sup> /h	全压 Full Pressure Pa	全压 效率 Full Pressure Efficiency (%)	需用轴 功率 Axis Power Required kW	采用 轴功率 Axis Power Adopted kW	配用电动机 Motor Matched	
										型号 Model	功率 Power kW
7.1	710	53.9	1450	15	12280	226.5	0.71	1.088	1.251	YT90L-4	1.5
				20	16501	250.9	0.75	1.533	1.763	YT100L1-4	2.2
				25	20722	261.4	0.77	1.954	2.247	YT100L2-4	3
				30	22641	292.7	0.75	2.454	2.822	YT100L2-4	3
				35	24944	331.1	0.71	3.23	3.715	YT112M-4	4
		36.7	960	15	8130	99.3	0.71	0.316	0.363	YT90S-6	0.75
				20	10925	110	0.75	0.445	0.512	YT90S-6	0.75
				25	17320	114.6	0.77	0.567	0.652	YT90S-6	0.75
				30	14990	128.4	0.75	0.713	0.820	YT90L-6	1.75
				35	16514	145.2	0.71	0.938	1.079	YT90L-6	1.1
8	800	60.7	1450	15	17567	287.6	0.71	1.976	2.272	YT100L2-4	3
				20	23605	318.6	0.75	2.785	3.203	YT112M-4	4
				25	29644	331.8	0.77	3.548	4.081	YT132S-4	5.5
				30	32389	371.6	0.75	4.458	5.127	YT132S-4	5.5
				35	35682	420.3	0.71	5.867	6.747	YT132M-4	7.5
		40.2	960	15	11630	126.1	0.71	0.574	0.660	YT90S-6	0.75
				20	15628	139.6	0.75	0.808	0.929	YT90L-6	1.1
				25	19626	131.1	0.77	0.928	1.067	YT90L-6	1.1
				30	21444	162.9	0.75	1.294	1.488	YT100L-6	1.5
				35	23624	184.2	0.71	1.703	1.958	YT112M-6	2.2
9	900	45.2	960	15	16560	159.5	0.71	1.034	1.809	YT100L-6	1.8
				20	22252	176.7	0.75	1.456	1.674	YT112M-6	2.2
				25	27944	184.1	0.77	1.856	2.134	YT112M-6	2.2
				30	30532	206.2	0.75	5.331	2.680	YT132S-6	3
				35	33937	233.2	0.71	3.069	3.529	YT132M1-6	4
10	1000	50.3	960	15	22716	197	0.71	1.75	2.013	YT112M1-6	2.2
				20	30524	218.2	0.75	2.467	2.837	YT132S-6	3
				25	38333	227.3	0.77	3.143	3.615	YT132M1-6	4
				30	41882	254.5	0.75	3.948	4.54	YT160M-6	5.5
				35	46141	287.9	0.71	5.197	5.975	YT160M-6	7.5
11.2	1120	56.3	960	15	31914	247	0.71	3.085	3.548	YT132M1-6	4
				20	42884	273.7	0.75	4.347	5.000	YT132M2-6	5.5
				25	53855	285.1	0.77	5.539	6.370	YT160M-6	7.5
				30	58841	319.3	0.75	6.958	8.002	Y60L-6	11
				35	648825	361.1	0.71	9.158	10.532	Y60L-6	11



T35、BT35、BFT35 风机外形及安装尺寸表

T35、BT35、BFT35 Axis Circulation Blower Shape Size & Installation Size



机号 NO. 尺寸 size	A	B	C	D	E	F	G	H	I	J	K	n	ød <sub>1</sub>	ød <sub>2</sub>	重量 Weight
2.8	283	320	346	355	220	258	212	220	100	175	260	4	10	12	10.26
3.15	316	350	381	400	240	282	232	240	220	190	300	8	10	12	13.2
3.55	358	385	422	450	280	327	272	260	210	230	380	8	10	12	14.28
4	404	450	478	500	300	349	292	290	280	240	370	8	12	12	21.03
4.5	454	500	528	580	260	314	252	330	310	205	430	8	12	12	22.93
5	504	560	588	630	300	364	290	340	410	240	430	12	12	12	30.96
5.6	564	620	649	710	830	404	318	390	440	260	490	12	12	14	41.34
6.3	634	690	719	800	390	474	378	440	440	320	540	12	12	14	57.56
7.1	715	770	800	900	400	494	388	490	630	330	700	16	12	14	87.82
8	805	360	891	1000	480	479	468	550	700	380	770	16	12	18	90.87
9	905	970	1001	1120	540	648	526	610	810	440	850	16	15	18	121.18
10	1006	1070	1103	1250	630	753	616	670	800	505	956	16	15	22	151.16
11.2	1126	1190	1223	1400	700	888	686	760	1080	580	1289	20	15	22	192.1



## T40 型轴流通风机

### T40 Axis Circulation Blower

#### 一、风机的用途

(1) T40 型通风机可用作一般工厂、仓库、办公室、住宅内通风换气或加强暖气散热之用。若将机壳去掉则可作自由风扇用。也可在较长的排气管道内间隔串联安装, 以提高管道中的风压。

(2) 该系列产品, 按叶轮直径不同共分成 10 种机号, 依次排列为 NO. 2.5、3、3.5、4、5、6、7、8、9、10 等。每一种机号叶片又可安装成 15°、20°、25°、30°、35°等 5 种角度。

(3) 该系列产品均采用叶轮直接装在电动机轴上的直联结构。在叶轮圆周速度不超过 60m/s 条件下配用 3 种转速: 2900r/min、1450r/min、960r/min。面对进风口方向看叶轮为逆时针转动。

(4) 通过通风机的气体应无腐蚀性及显著粉尘, 其温度不得超过 45℃。

#### 一、Purpose of the blower

(1) T40 ventilator may be used for the ventilation or heat radiation in the ordinary plant, warehouse, office room, dwelling house. By removing the shell, it may be used as free fan. It also may be installed inside the pipeline intervally in series to enhance the wind pressure inside the pipeline.

(2) According to the impeller diameter, this series of products may be divided into 10 machine number as : No.: 2.5, 3, 3.5, 4, 5, 6, 7, 8, 9, 10. The impeller of each machine may be installed at five angle of 15°, 20°, 25°, 30°, 35°.

(3) This series of products all adopt the direct link structure with the impeller installed on the motor shaft. Under the condition of impeller circle speed of no more than 60m/s, three rotate speeds are adopted as: 2900r/min, 1450r/min, 960r/min. Facing the wind hole, the impeller turns anticlockwise.

(4) The air passing the ventilator shall not have the causticity or obvious powder dust, and the temperature shall not be more than 45℃.



# 丹徒风机

## DAN TU FANS

### T40型轴流通风机性能与选用件表

Performance & Parts Chart of Model T40 shaft ventilator

机号 No.	叶轮直径 Impeller diameter (mm)	转速 (r/min)	叶片角度 Impeller angle	风量 Wind quantity (m <sup>3</sup> /h)	全压 (Pa)	空气效率 Air efficiency (%)	采用轴功率 Shaft power (kW)	配用电机 Motor Matched	
								型号 Model	功率 kW power
2.5	250	2900	15	1130	125	78	0.0502	A1 - 5622	0.18
			20	1450	138	81	0.0681		
			25	1860	140	84	0.0862		
			30	2010	149	83	0.0995		
			35	2270	184	80	0.1440		
		1450	15	564	31	78	0.0063	A1 - 5614	0.09
			20	723	34	81	0.0085		
			25	931	35	84	0.0108		
			30	1010	37	83	0.0124		
			35	1140	46	80	0.0180		
3	300	2900	15	1950	180	78	0.125	A1 - 7112 A1 - 7122	0.37 0.55
			20	2500	199	81	0.170		
			25	3220	202	84	0.214		
			30	3480	214	83	0.248		
			35	3930	265	80	0.358		
		1450	15	975	45	78	0.0155	A1 - 7114	0.25
			20	1250	50	81	0.0212		
			25	1610	50	84	0.0268		
			30	1740	53	83	0.0301		
			35	1960	66	80	0.0448		
3.5	350	2900	15	3100	245	78	0.270	A1 - 7132 Y802 - 2	0.75 1.1
			20	3970	271	81	0.367		
			25	5120	274	84	0.463		
			30	5520	292	83	0.535		
			35	6240	362	80	0.775		
		1450	15	1550	61	78	0.0338	A1 - 7114	0.25
			20	1980	67	81	0.0459		
			25	2560	68	84	0.0579		
			30	2760	73	83	0.0669		
			35	3120	90	80	0.0969		
4	400	2900	15	4630	320	78	0.526	Y802 - 2 Y90S - 2 Y90L - 2	1.1 1.5 2.2
			20	5920	355	81	0.714		
			25	7640	360	84	0.903		
			30	8240	382	83	1.043		
			35	9310	473	80	1.507		
		1450	15	2320	80	78	0.0658	A1 - 7114	0.25
			20	2960	88	81	0.0893		
			25	3820	90	84	0.1129		
			30	4120	95	83	0.1304		
			35	4660	118	80	0.1884		
5	500	1450	15	4520	125	78	0.201	Y802 - 4	0.75
			20	5780	138	81	0.273		
			25	7450	140	80	0.344		
			30	8050	149	83	0.398		
			35	9090	184	80	0.576		
		960	15	2990	53	78	0.0582	Y90S - 6	0.75
			20	3830	60	81	0.0790		
			25	4940	61	84	0.0999		
			30	5330	65	83	0.1153		
			35	6020	81	80	0.1670		



# 丹徒风机

## DAN TU FANS

### T40型轴流通风机性能与选用件表

Performance & Parts Chart of Model T40 shaft ventilator

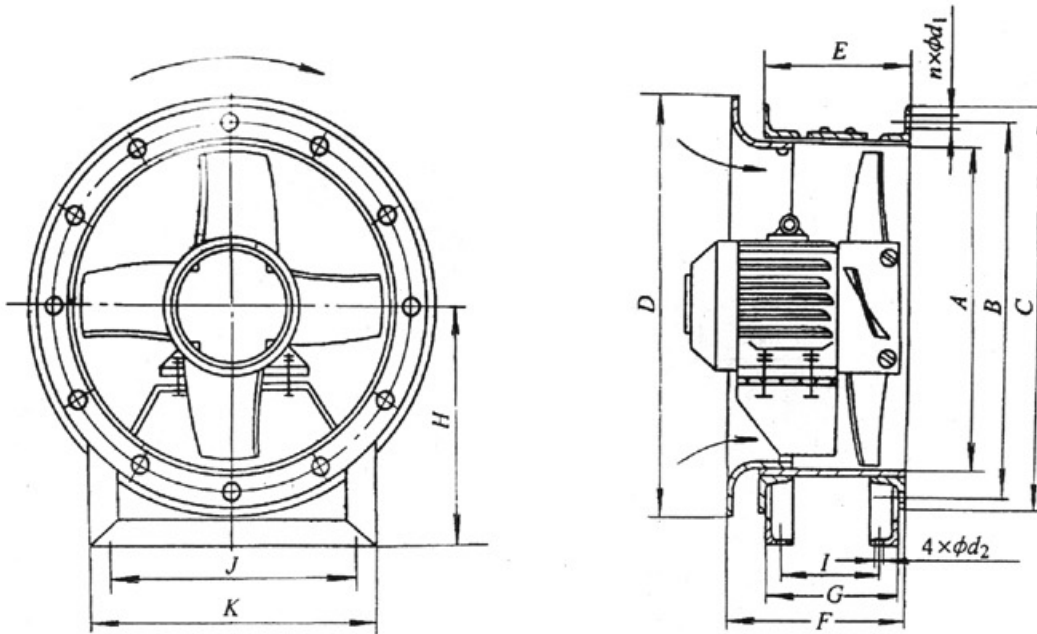
机号 No.	叶轮直径 Impeller diameter (mm)	转速 (r/min)	叶片角度 Impeller angle	风量 Wind quantity (m <sup>3</sup> /h)	全压 (Pa)	空气效率 Air efficiency (%)	采用轴功率 Shaft power (kW)	配用电机 Motor Matched	
								型号 Model	功率 kW power
6	600	1450	15	7810	180	78	0.500	Y90S-4  Y90L-4 Y1100L1-4	1.1  1.5 2.2
			20	9990	200	81	0.678		
			25	12900	202	84	0.857		
			30	13900	214	83	0.990		
			35	15700	266	80	1.433		
	960	1450	15	5160	79	78	0.145	Y90S-6	0.75
			20	6610	87	81	0.197		
			25	8510	88	84	0.249		
			30	9200	94	83	0.288		
			35	10400	116	80	0.416		
7	700	1450	15	12400	245	78	1.080	Y100L-4 Y100L1-4 Y100L2-4 Y112M-4	1.5 2.2 3 4
			20	15900	271	81	1.470		
			25	20500	274	84	1.850		
			30	22100	294	83	2.140		
			35	25000	362	80	3.100		
	960	1450	15	8200	107	78	0.314	Y90S-6	0.75
			20	10500	118	81	0.462		
			25	13500	120	84	0.538		
			30	14600	128	83	0.622		
			35	16500	158	80	0.900		
8	800	1450	15	18500	320	78	2.110	Y100L2-4 Y112M-4 Y112S-4 Y140M-4	3 4 5.5 7.5
			20	23700	355	81	2.860		
			25	30500	358	84	3.620		
			30	33000	381	83	4.180		
			35	37200	473	80	6.050		
	960	1450	15	12300	140	78	0.611	Y90-L-6 Y100L-6 Y112M-6	1.1 1.5 2.2
			20	15700	155	81	0.829		
			25	20200	157	84	1.048		
			30	21800	167	83	1.210		
			35	24700	207	80	1.750		
9	900	960	15	17400	177	78	1.100	Y100L-6 Y100M-6 Y132S-6 Y132M1-6	1.5 2.2 3 4
			20	22300	197	81	1.500		
			25	28700	199	84	1.890		
			30	31100	211	83	2.190		
			35	35100	262	80	3.160		
10	1000	960	15	24000	219	78	1.870	Y112M-6 Y132S-6 Y132M1-6 Y132M2-6 Y160M-6	2.2 3 4 5.5 7.6
			20	30700	243	81	2.530		
			25	39500	246	84	3.200		
			30	42700	261	83	3.700		
			35	48200	323	80	5.350		



丹徒风机

DAN TU FANS

T40 轴流通风机外形及安装尺寸图  
T40 Axis Circulation Blower Shape Size & Installation Size



单位:毫米 Units:Mm

尺寸 size	A	B	C	D	E	F	G	H	I	J	K	n 孔	Ød <sub>1</sub>	Ød <sub>2</sub>
机号No														
2.5	253	275	296	300	118	144	110	163	82	175	225	6	7	10
3	303	331	353	360	141	171	183	195	104	210	270	6	7	12
3.5	354	382	404	420	165	200	162	228	128	245	315	6	7	12
4	404	432	454	480	188	227	184	260	150	280	360	6	7	12
5	505	537	565	600	235	283	231	325	191	350	450	8	10	12
6	606	638	666	720	282	339	278	390	234	420	540	8	10	15
7	707	739	767	840	330	396	325	455	271	490	630	10	12	14
8	808	846	872	960	376	453	368	520	298	560	720	10	12	23
9	909	958	994	1080	423	509	415	585	345	630	810	12	12	23
10	1010	1059	1059	1200	470	565	462	650	382	700	900	12	12	21