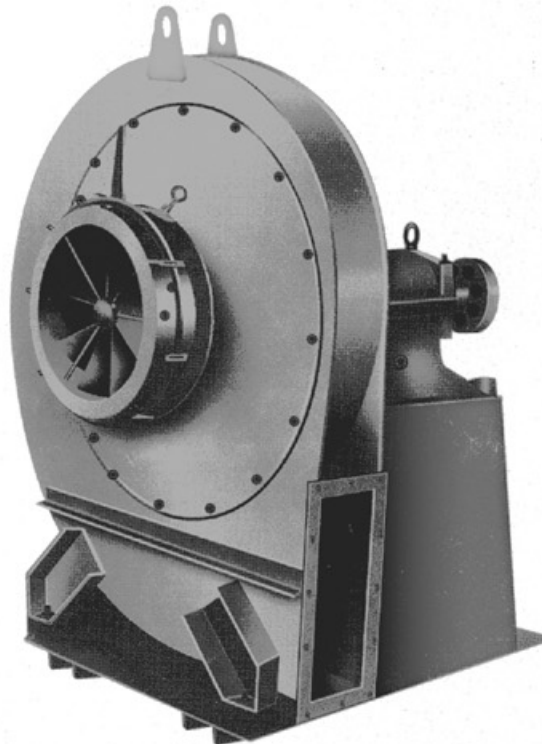




丹徒风机

DAN TU FANS

YX9-35 型 锅炉离心引风机 Model YX9-35 Centrifugal Boiler Blower



YX9-35 型 5C、6.3C、8C\D 是为适应 1t、2t、4t 锅炉配套而研制开发的风机产品。凡进气条件相当,性能又相适应者均可选用。最高温度不得超过 250℃。在引风机前加除尘效率不低于 85% 的除尘装置,以降低进入风机的烟气含尘量,提高风机的使用寿命。

风机的性能以风机的风量、全压、主轴转速、轴功率和效率等参数表示,性能表中所给出的性能,按气体温度 $t=200^{\circ}\text{C}$,大气压 $P_0=101325\text{Pa}$,气体密度 $\rho=0.745\text{kg}/\text{m}^3$ 的空气介质计算。

本型引风机为单吸入进气,机号有 NO. 5、6.3、8 三种。

各机号风机均可制成左旋和右旋两种型式。

Model YX9-35 5C、6.3C、8C\D are developed to apply to the boiler of 1t, 2t or 4t, which may be selected by those with certain absorption condition and applicable performance. No more than 250℃ of the highest temperature. Add the dust catching device of no less than 85% dust catching efficiency in front of the blower, so as to reduce the smoke content entered the blower, and increase the blower's longevity.

The blower's performance is indicated with the specifications of wind volume, full pressure, rotating speed of the principal axis, axis power, efficiency, etc. Among the performance shown in the performance chart, the performance of blower is calculated according to the air medium that: air temperature $t=200^{\circ}\text{C}$, atmospheric pressure $P_0=101325\text{Pa}$, air density $\rho=0.745\text{kg}/\text{m}^3$

This model of blower is single inhalation, 3 types: NO. 5、6.3、8

Each may be made in the model of left revolving or right revolving. For the convenience of customer's installation and debug, the unitary bracket and shock absorption bracket.



YX9-35 锅炉离心引风机性能表

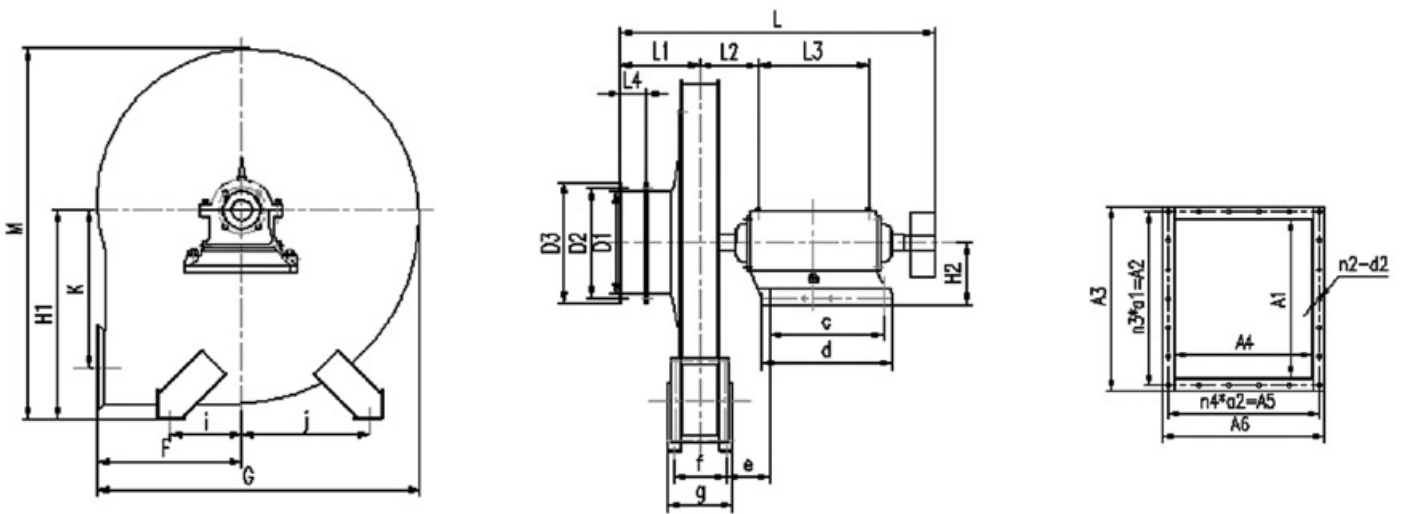
Model YX9-35 Centrifugal Boiler Blower Datasheet

机号 No.	转速 r/min	序号 No.	流量 Capacity m ³ /h	全压 Pa	电动机	
					motor	
					规格型号 Type	功率 Power kW
5C	2240	1	5894	2314	Y132S1-2	5.5
		2	6610	2265	Y132S2-2	7.5
		3	7902	2226		
		4	8884	2108	Y160M1-2	11
6.3C	1800	1	9474	2452	Y160M-4	11
		2	10626	2393		
		3	14281	2206	Y160L-4	15
		4	15840	2128		
8C	1600	1	17245	3199	Y180L-4	22
		2	19342	3040		
		3	23116	2961	Y225S-4	37
		4	25992	2814		
8D	1450	1	17528	2501	Y180M-4	18.5
		2	20949	2432	Y160L-4	30
		3	23556	2304		
		4	26128	2226		



YX9-35-6.3C、8C、8D 外形尺寸及安装尺寸

YX9-35-6.3C、8C、8D Shape Size & Installation Size



机号 No	进风口尺寸 Inlet Size				出风口尺寸 Outlet Size												
	D1	D2	D3	n1×d1	A1	A2	A3	A4	A5	A6	r2×c2	r3×d1	r4×c2	H			
6.3	Φ400	Φ450	Φ500	8-Φ12	100	450	481	200	246	281	16-Φ10	90×5	82×3	700			
8	Φ500	Φ560	Φ610	12-Φ12	500	553	592	250	300	342	22-Φ8	79×7	75×4	900			
机号 No	外形尺寸 Shape Size and Installation Size																
	M	K	F	G	H2	L	l1	l2	l3	l4	c	d	e	f	g	i	j
6.3	1304	426.5	450	1015	250	1374	378	273	150	140	460	530	181	268	315	300	350
8	1636	544	560	1275	250	1496	180.5	292	150	170	460	530	166	332	388	450	450